

This document downloaded from
vulcanhammer.net vulcanhammer.info
Chet Aero Marine

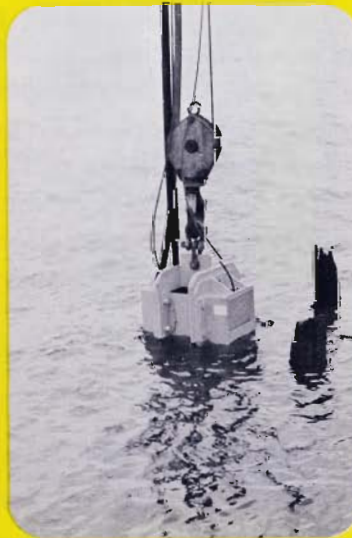
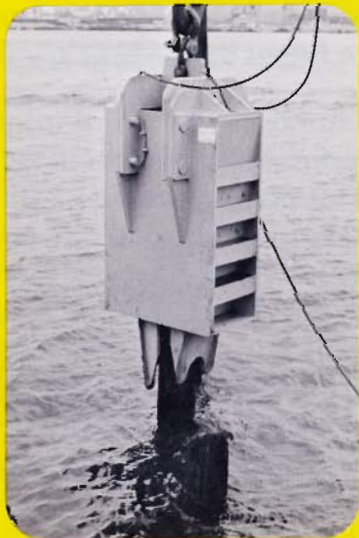


Don't forget to visit our companion site
<http://www.vulcanhammer.org>

Use subject to the terms and conditions of the respective websites.

VULCAN

WOOD PILE PULLER



VULCAN

IRON WORKS INC.



WOOD PILE PULLER

The VULCAN WOOD PILE PULLER is a simple but very effective tool for the extraction of wood piling. Over the years, many attempts have been made to devise a wood pile puller that was sufficiently versatile to serve all types of wood pile pulling. Until now there have been few successful devices used and those that were successful were too specialized for general usage. Additionally the operation is so simple that it only requires the crane operator thereby minimizing labor costs.

The VULCAN WOOD PILE PULLER was "field conceived" and contractor proven prior to being put into production. Having only two moving parts, the only service requirement is occasional lubrication. Grease fittings are provided on both sides of Pile Puller in conveniently accessible locations. Being of extremely rugged construction, it is virtually impossible to render it inoperative in service.

The VULCAN WOOD PILE PULLER is currently manufactured in two models:

1. The Extractor Duty Model, Model No. 16P100, (as seen opposite in Fig. 1) is configured to be used with all sizes of Vulcan Pile Extractors, Nilens Pile Extractors and all presently available electric and hydraulic vibratory hammers.
2. The Crane Duty Model, Model No. 13P-100, is configured for use with only the crane providing the lifting or pulling

force. This model is the same in appearance as that opposite except that the removable extractor bail (Letter **A**), Figure 1) is not included. This model is somewhat lighter than the Extractor Duty Model.

When either Model is used with the crane only, it can be seen from the opposite cutaway that the top of the PILE PULLER is open, therefore allowing any desired length of the pile to be pulled to pass through the PILE PULLER body. This allows for underwater operation as well as lowering the PILE PULLER to an area on the pile where firmer or better grip is to be found.

As stated opposite, the standard PILE PULLER GRIPS are furnished with multiple half round grip bars to increase frictional effectiveness. Occasionally grip bars of a different shape or size are required to meet unusual job conditions. Grip bars of any type to meet customer requirements may be had on request. Also, if required by contractor job conditions longer than standard grip control cables may be had on request. The standard grip control cables are twenty feet in length.

The VULCAN WOOD PILE PULLER operation is the acme of simplicity. Position the PULLER over the pile . . . Raise the grips inside the PULLER body . . . Lower the PULLER over the pile . . . Release the Grip Control Cable . . . Pull on the Grip Body with the main hoist line and the Grips automatically grip the pile.

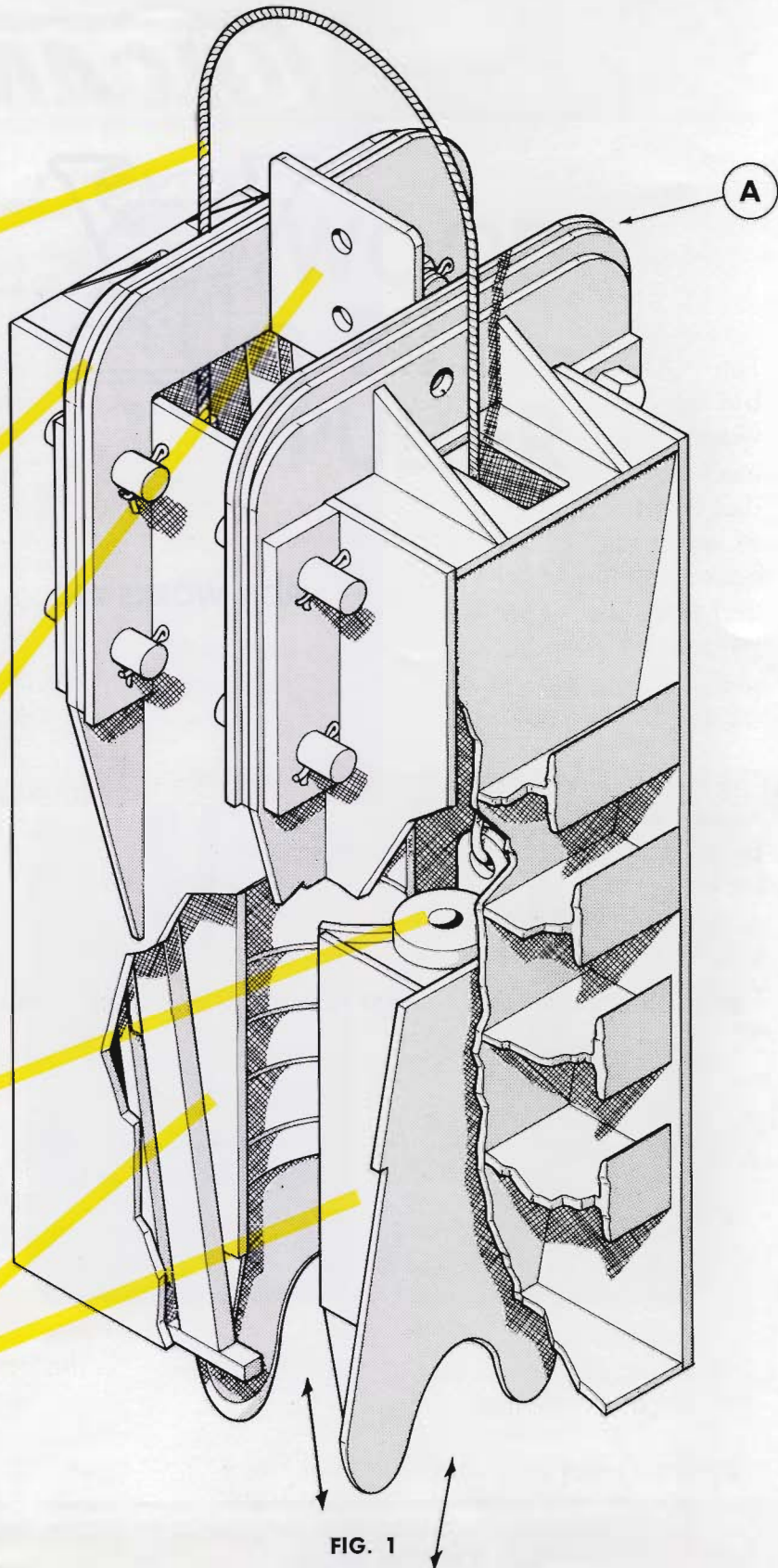
GRIP CONTROL CABLE is used to raise and lower the Puller Grips when releasing from the pile or preparing to grip the pile. Normally the Grip Control Cable is attached to the No. 2 line of the crane.

REMOVABLE EXTRACTOR BAIL is provided so that the WOOD PILE PULLER may be used with or without mechanical pile extractors. When a mechanical extractor is used the entire PULLER is handled through the extractor. When crane pull only is used there are holes in each side of the lifting ribs for the attachment of a cable sling with which to handle the PULLER.

EXTRACTOR ATTACHMENT PLATE is provided in the top of the removable extractor bail to provide an attachment point for all of the mechanical extractors mentioned on Page 2. This plate is so sized as to accommodate presently available Vibro Hammer clamps.

GRIP BUMPERS are provided to cushion the impact of the Grips as they strike the top of the PULLER upon release from the pile. Four Grip Bumpers are provided and are easily replaced without any disassembly.

PILE GRIPS are heavily constructed for long service. Each grip is provided with half round grip bars to increase the frictional effectiveness of the PULLER and to provide better bite in deteriorated wood piling.





VULCAN

IRON WORKS INC.

2725 N. AUSTRALIAN AVE. • WEST PALM BEACH, FLA. 33407 • Phone (305) 842-1515 • TELEX 51-3432

Sold and Serviced by